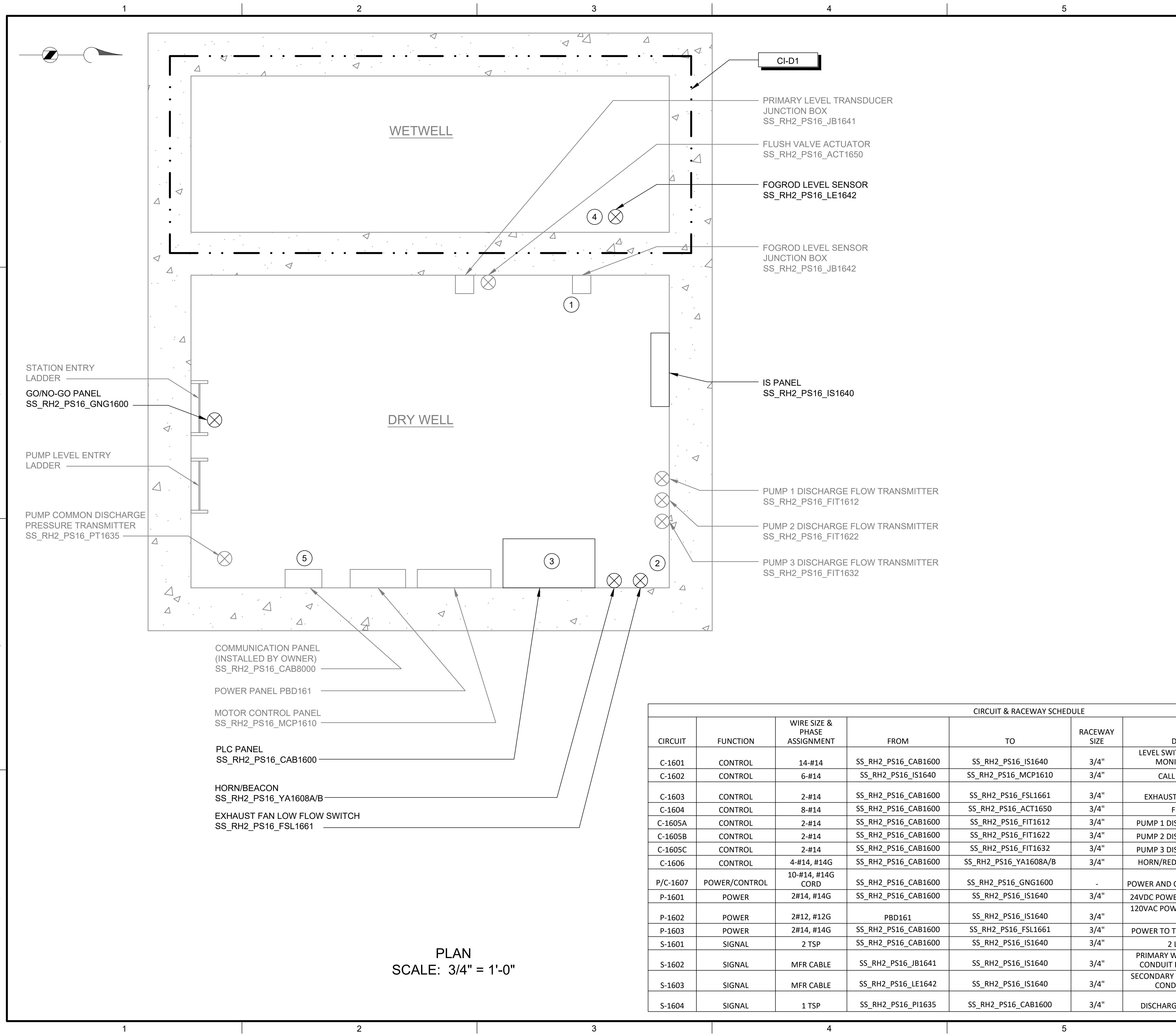


Path: C:\USERS\DJACKSON\BPC\DWG\1820948 FILENAME: I-16701.DWG PLOT DATE: 5/4/2022 9:48 AM CAD USER: DAN JACKSON



PLAN
SCALE: 3/4" = 1'-0"

GENERAL NOTES:

1. PLAN DRAWING IS PARTIAL REPRESENTATION OF THE SITE AND IS ONLY INTENDED TO PROVIDE DETAILS RELATED TO THE SCOPE OF THIS WORK.
2. REFERENCE AS-BUILT RECORD DRAWING BY CAREY & KRAMER CONSULTING ENGINEERS, DRAWING NUMBER 6223-M310.1, SHEET 11 OF 32 FOR ELEVATIONS RELATED TO WIRING AND CONDUIT.
3. REFER TO CIRCUIT & RACEWAY SCHEDULE ON THIS DRAWING FOR NEW WIRING AND CONDUIT WITHIN THE PUMP STATION.

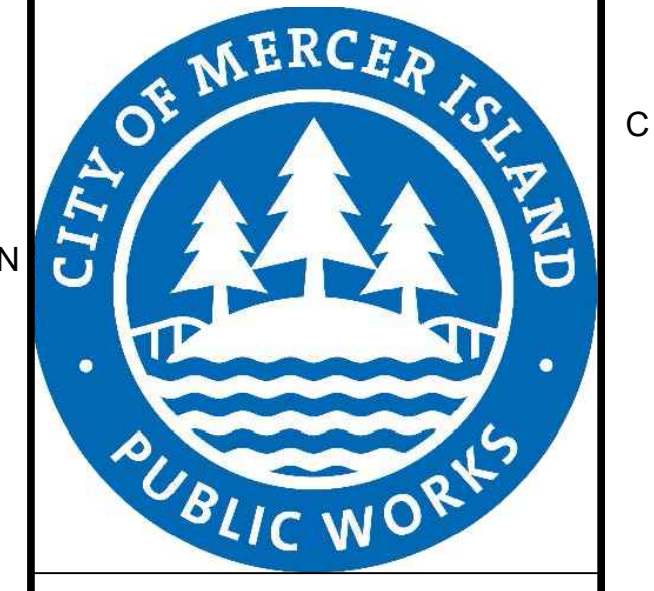
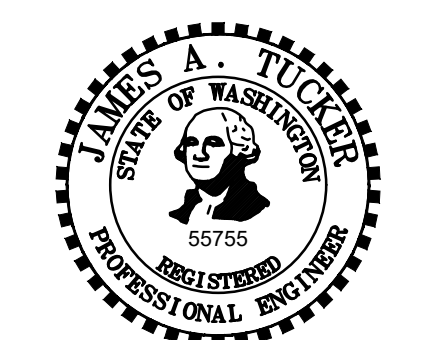
KEY NOTES:

- 1 REFER TO SPECIFICATION DIVISION 26 05 00 FOR CONDUIT SEAL OFF REQUIREMENTS FROM CLASS I DIV 1 WETWELL.
- 2 REFER TO DWG I-00004 DETAIL C FOR THERMAL FLOW SWITCH INSTALLATION DETAIL ON EXISTING EXHAUST DUCT.
- 3 REFER TO SECTION 26 05 00 FOR PLACING COMPRESSION FITTINGS ON EXISTING CONDUIT TO ROUTE TO NEW PLC PANEL.
- 4 COORDINATE WITH OWNER ON FOGROD INSTALLATION LOCATION IN WETWELL.
- 5 LOCATION OF COMMUNICATION PANEL IS APPROXIMATE. COORDINATE WITH OWNER ON FINAL COMMUNICATION PANEL LOCATION.



701 PIKE STREET
SUITE 1200
SEATTLE, WASHINGTON

PERMIT ISSUE



**CITY OF MERCER ISLAND
SEWER SCADA SYSTEMS
REPLACEMENT**

REVISIONS		
REV	DATE	DESCRIPTION

DESIGNED: CGA
DRAWN: DNW
CHECKED: LSL
CHECKED: LSL
APPROVED: CGA

FILENAME: I-16701.DWG
BC PROJECT NUMBER: 153585
CLIENT PROJECT NUMBER

**INSTRUMENTATION
PUMP STATION 16 -
PLAN**

DRAWING NUMBER
I-16701
SHEET NUMBER
XX OF XX

CIRCUIT & RACEWAY SCHEDULE							
CIRCUIT	FUNCTION	WIRE SIZE & PHASE ASSIGNMENT	FROM	TO	RACEWAY SIZE	DESCRIPTION	LOCATION(S)
C-1601	CONTROL	14-#14	SS_RH2_PS16_CAB1600	SS_RH2_PS16_IS1640	3/4"	LEVEL SWITCHES, FAULT, PANEL MONITORING, SPARES	GRATING LEVEL
C-1602	CONTROL	6-#14	SS_RH2_PS16_IS1640	SS_RH2_PS16_MCP1610	3/4"	CALL PUMPS TO RUN	GRATING LEVEL
C-1603	CONTROL	2-#14	SS_RH2_PS16_CAB1600	SS_RH2_PS16_FSL1661	3/4"	EXHAUST FAN FLOW SWITCH	GRATING LEVEL
C-1604	CONTROL	8-#14	SS_RH2_PS16_CAB1600	SS_RH2_PS16_ACT1650	3/4"	FLUSH VALVE	GRATING LEVEL
C-1605A	CONTROL	2-#14	SS_RH2_PS16_CAB1600	SS_RH2_PS16_FIT1612	3/4"	PUMP 1 DISCHARGE FLOW PULSE	GRATING LEVEL
C-1605B	CONTROL	2-#14	SS_RH2_PS16_CAB1600	SS_RH2_PS16_FIT1622	3/4"	PUMP 2 DISCHARGE FLOW PULSE	GRATING LEVEL
C-1605C	CONTROL	2-#14	SS_RH2_PS16_CAB1600	SS_RH2_PS16_FIT1632	3/4"	PUMP 3 DISCHARGE FLOW PULSE	GRATING LEVEL
C-1606	CONTROL	4-#14, #14G	SS_RH2_PS16_CAB1600	SS_RH2_PS16_YA1608A/B	3/4"	HORN/RED BEACON FAN ALARM	GRATING LEVEL
P/C-1607	POWER/CONTROL	10-#14, #14G CORD	SS_RH2_PS16_CAB1600	SS_RH2_PS16_GNG1600	-	POWER AND CONTROL TO GNG PANEL	GRATING LEVEL TO STATION HATCH DOOR
P-1601	POWER	2#14, #14G	SS_RH2_PS16_CAB1600	SS_RH2_PS16_IS1640	3/4"	24VDC POWER TO IS PANEL MODULE	GRATING LEVEL
P-1602	POWER	2#12, #12G	PBD161	SS_RH2_PS16_IS1640	3/4"	120VAC POWER TO IS PANEL POWER SUPPLY	GRATING LEVEL
P-1603	POWER	2#14, #14G	SS_RH2_PS16_CAB1600	SS_RH2_PS16_FSL1661	3/4"	POWER TO THERMAL FLOW SWITCH	GRATING LEVEL
S-1601	SIGNAL	2 TSP	SS_RH2_PS16_CAB1600	SS_RH2_PS16_IS1640	3/4"	2 LIT READINGS	GRATING LEVEL
S-1602	SIGNAL	MFR CABLE	SS_RH2_PS16_JB1641	SS_RH2_PS16_IS1640	3/4"	PRIMARY WETWELL LEVEL. *NEW CONDUIT FROM JB TO IS PANEL	GRATING LEVEL TO PUMP LEVEL
S-1603	SIGNAL	MFR CABLE	SS_RH2_PS16_LE1642	SS_RH2_PS16_IS1640	3/4"	SECONDARY WETWELL LEVEL. *NEW CONDUIT IN DRY WELL	GRATING LEVEL
S-1604	SIGNAL	1 TSP	SS_RH2_PS16_PT1635	SS_RH2_PS16_CAB1600	3/4"	DISCHARGE PRESSURE HEADER	GRATING LEVEL TO PUMP LEVEL

LINE IS 2 INCHES AT FULL SIZE